

BODY TYPE: EXTRUDED ALUMINUM  
TANK TYPE: DRY SIDE

DOC. NO. : E018-1 DRAWING TEMPLATE  
REV. C 2017-02-05

SPECIFICATION

**CHASSIS:**  
-INTERNATIONAL 7400 SBA 4x2 CREW CAB  
-40,000 LB GVWR; 14,000 LB FRONT / 26,000 LB REAR  
-DIESEL ENGINE, CUMMINS L9, EPA 2017, 350 HP  
-AUTOMATIC TRANSMISSION, ALLISON 3000 EVS

**PUMP:**  
-DARLEY PTO HM 500  
-500 USGPM (1893 LPM) (416 IGPM) AT 150 PSI  
-THIRD PARTY CERTIFICATION MEETING NFPA 1901-2016 EDITION

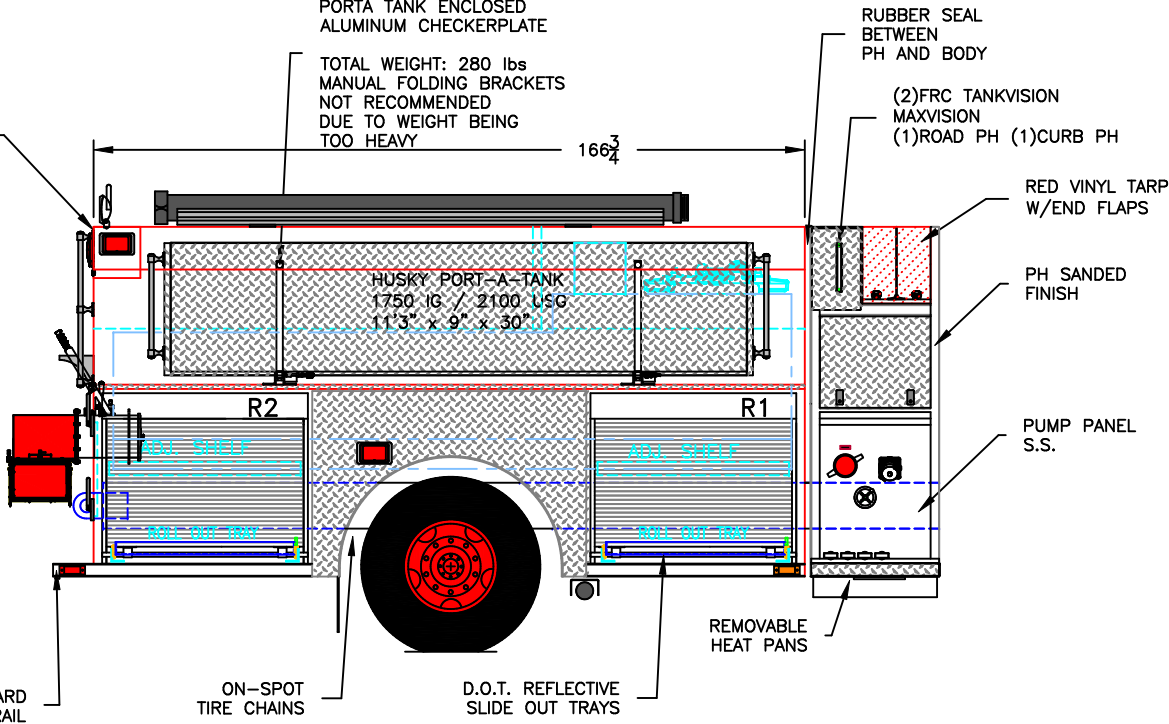
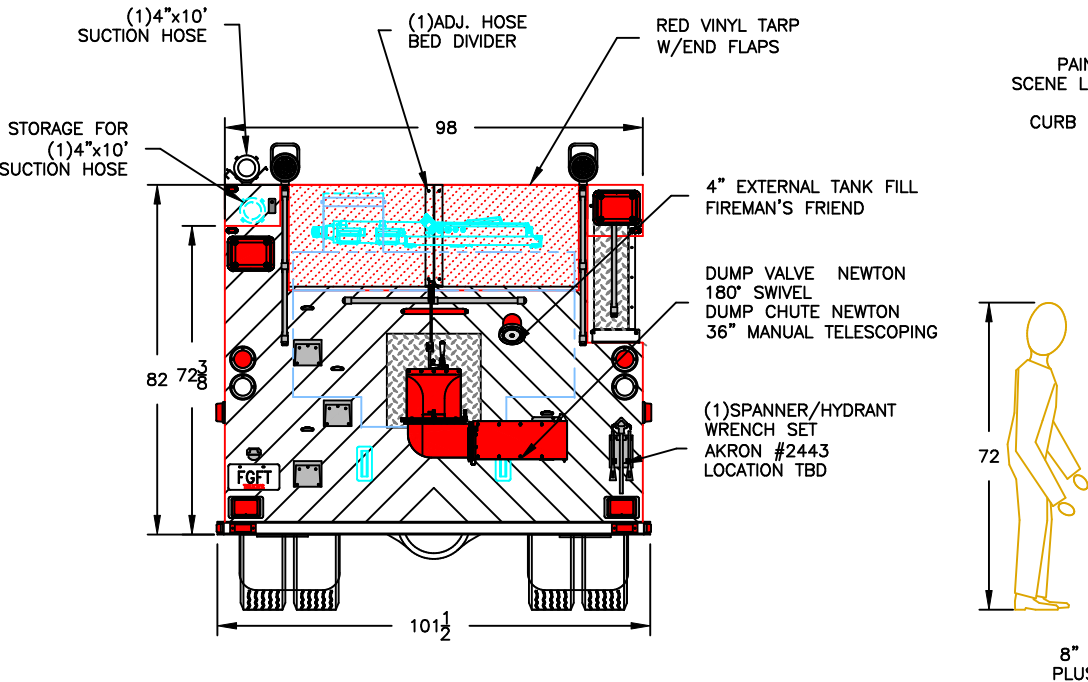
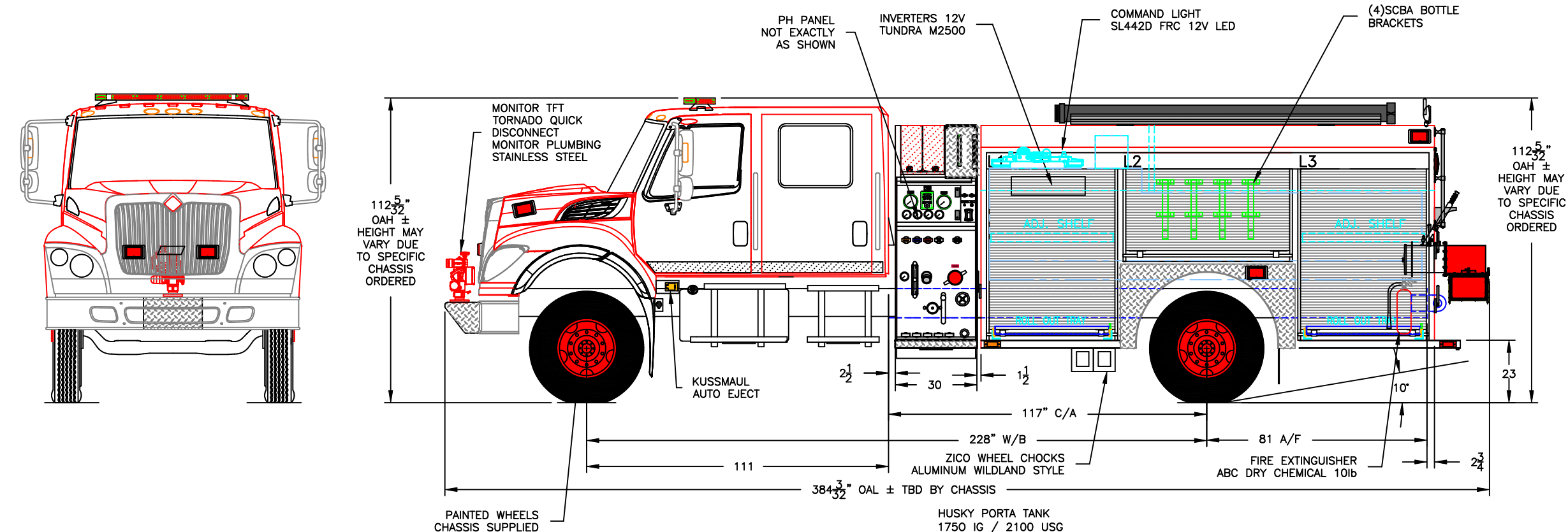
**PLUMBING: STAINLESS STEEL SCHEDULE 10**  
-2 x 4" SUCTION, (1)ROAD (1)CURB BOTH MANUAL  
-1 x 2 1/2" GATED SUCTION, (1)ROAD  
-2 x 2 1/2" DISCHARGE PORT, (1)ROAD (1)CURB  
-2 x 1 1/2" CROSS LAY'S  
-1 x 2" BUMPER TURRET PLUMBING  
-1 x 4" EXTERNAL TANK FILL FIREMAN'S FRIEND (1)REAR RH  
-4" TANK TO PUMP, W/4" BUTTERFLY VALVE -AIR DUAL CONTROL  
-2" TANK FILL AKRON

**TANK:**  
-1000 IG (1200 USG) POLY

**BODY:**  
-ER NO STANCHIONS ALUMINUM HIGH/LOW  
-BODY UNDERCOATING - CORASHIELD

**EMERGENCY EQUIPMENT-ACCESSORIES:**  
-LIGHT BAR 56" LED  
-SIREN  
-100W SPEAKER  
-2 x FLOOD LIGHTS  
-2 x GRILLE LIGHTS RED  
-2 x SIDE UPPER WARNING LIGHTS RED  
-4 x SIDE LOWER WARNING LIGHTS RED  
-2 x REAR UPR WARN. LIGHT SRED  
-2 x REAR LWR WARN. LIGHTS RED  
-8 x GROUND LIGHTS  
-AIR CHARGING PROVISION  
-BATTERY CHARGING PROVISION  
-(2) 4" x 10' SUCTION HOSE  
-(1) 4" x BARREL STRAINER KOCHERK

**MODEL:**  
WHELEN JUSTICE 56"  
WHELEN 295SLSA1  
WHELEN SA315P  
DTI LED R10Wx8  
WHELEN 600 LED  
WHELEN 600 LED  
WHELEN 600 LED  
WHELEN 900 LED  
WHELEN 600 LED  
LUMA BAR H20-12"  
KUSSAMUL PUMP  
PLUS 1200



THIS DRAWING IS PROPERTY  
OF FORT GARRY FIRE TRUCKS LTD (FGFT)  
AND MUST NOT BE COPIED OR REPRODUCED  
IN WHOLE OR IN PART, BY ANY METHOD  
WHATSOEVER, WITHOUT AUTHORIZATION OF FGFT.

COMPT.	COMPARTMENT FRAME DIMENSIONS
L1	48.25W x 69H x 15/27D
L2	62.25W x 40H x 15D
L3	48.25W x 69H x 15/27D
R1	48.25W x 40H x 15/27D
R2	48.25W x 40H x 15/27D

1. THE DRAWING IS FOR REFERENCE PURPOSE, ONLY.  
THE DRAWING MAY OR MAY NOT SHOW ALL ITEMS AS DESCRIBED IN THE WRITTEN DETAILED SPECIFICATION.  
2. INCLUSION OF AN ITEM ON THE DRAWING DOES NOT CONSTITUTE INCLUSION OF THAT ITEM WITH THE FINAL DELIVERY OF THE UNIT. SPECIFICATION SHALL BE FINAL AUTHORITY TO BE DETERMINED WHAT IS SUPPLIED ON THE APPARATUS.  
3. THE EFFECTIVE DOOR OPENING FOR ROLLUP DOORS WILL BE REDUCED APPROX. 10" IN HEIGHT, 2" IN DEPTH AND 2" IN WIDTH FROM SHOWN FRAME OPENINGS AND 2" IN HEIGHT, 3" IN DEPTH AND UP TO 4" IN WIDTH FOR PAN DOORS. DIMENSIONS TOLERANCE ± 1/4"  
4. PUMP RATING AND TANK CAPACITY ARE SHOWN AS NOMINAL VALUES. THE ACTUAL VALUES MAY VARY.  
5. CHASSIS GVWR SHOWN IS THE MINIMUM REQUIRED FOR STANDARD BODY DEPENDING OF OPTIONS, GVWR MAY NEED TO BE INCREASED.  
6. COMMERCIAL OEM CAB STEPS MAY NOT MEET ULC STANDARD. SELECT CUSTOM STEPS WHEN REQUIRED  
7. OVERALL HEIGHT IS IN LOADED CONDITION, UNLOADED HEIGHT MAY BE 4" ABOVE HEIGHT SHOWN. AFTER TRUCK IS COMPLETED ADDITIONAL STEPS MAY BE REQUIRED TO MEET THE STANDARD.  
8. DIMENSIONS SHOWN ARE APPROXIMATE AND ARE SUBJECT TO CHANGE AS MAY BE FOUND NECESSARY DURING DESIGN. DO NOT SCALE DRAWING.  
9. MINOR DETAILS AND REFLECTIVE STRIPING ARE NOT SHOWN.

B	CUSTOMER SIGN OFF DRAWING	TV	08 NOV 2017
A	CRM DRAWING		
REV	DESCRIPTION OF CHANGE	BY	DATE

**FORT GARRY**  
**FIRE TRUCKS**  
WWW.FGFT.COM  
WINNIPEG, MANITOBA, CANADA 1-800-565-3473

DESCRIPTION: YUKON FIRE MARSHAL'S OFFICE		
SCALE: 1:46	DWG. BY: JAR	CHK. BY:

MODEL: ERS10D2	SHEET: 1 OF 1
DATE: 11 AUG 2017	DWG. NO. : M0897